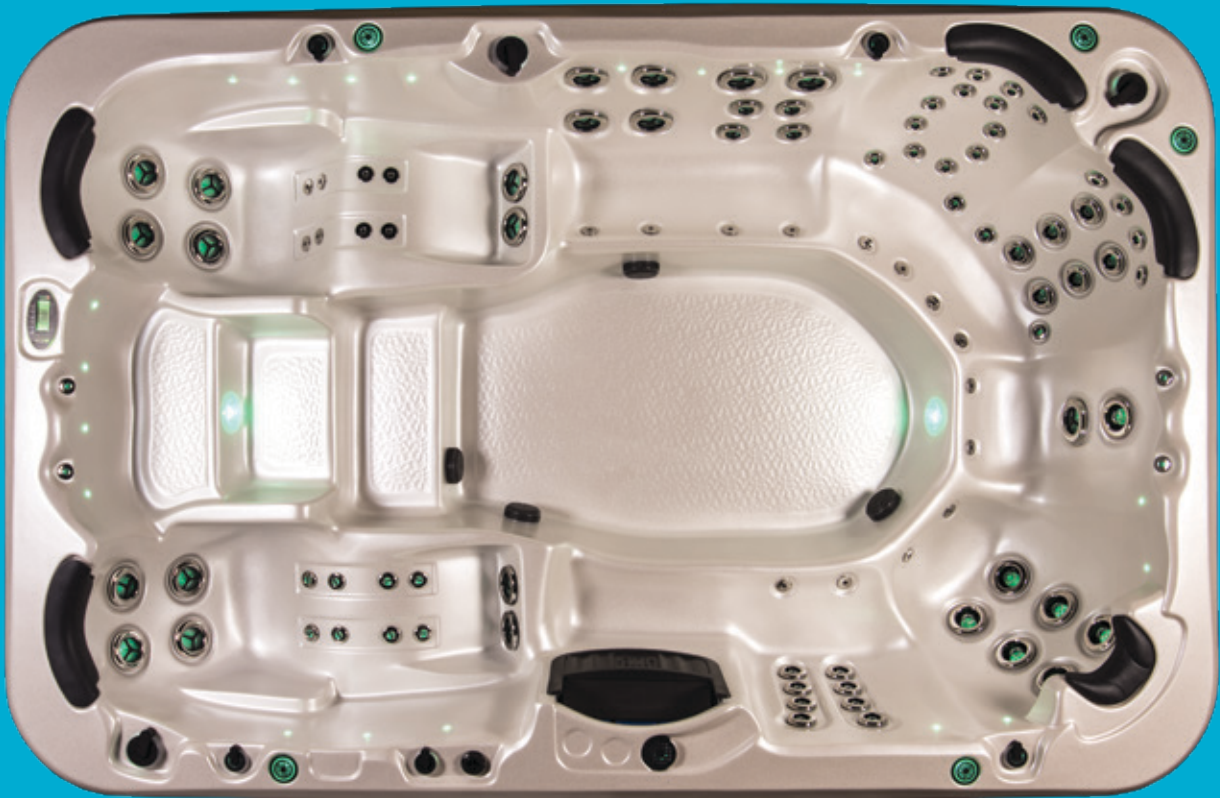




Vortex Spas

Palladium Spa Technical Information Pack



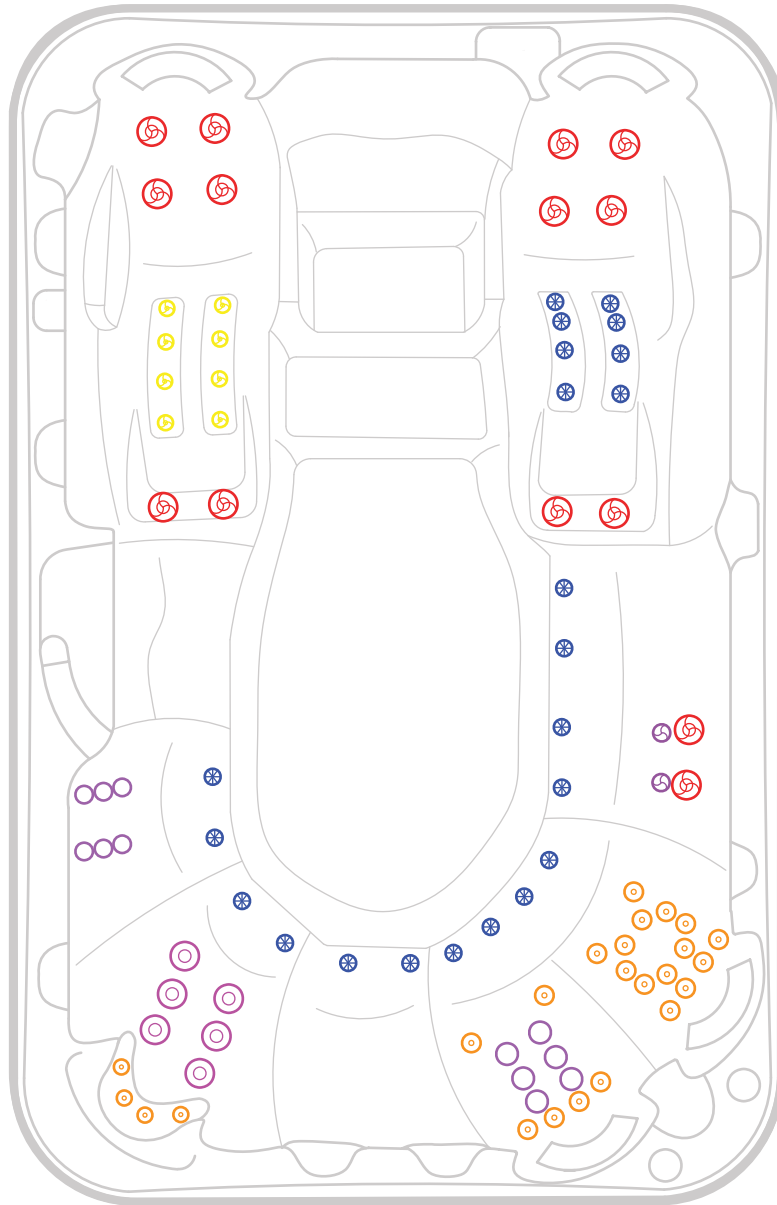
Dimensions: 352 x 229 x 90cm

A super sized hydrotherapy spa
with room for 9.



Palladium Spa

Dimensions: 352 x 229 x 90cm



 14 x 127mm Single Spinning Jets

 6 x 127mm Directional Jets

 12 x 75mm Directional Jets

 2 x 75mm Single Spinning Jets

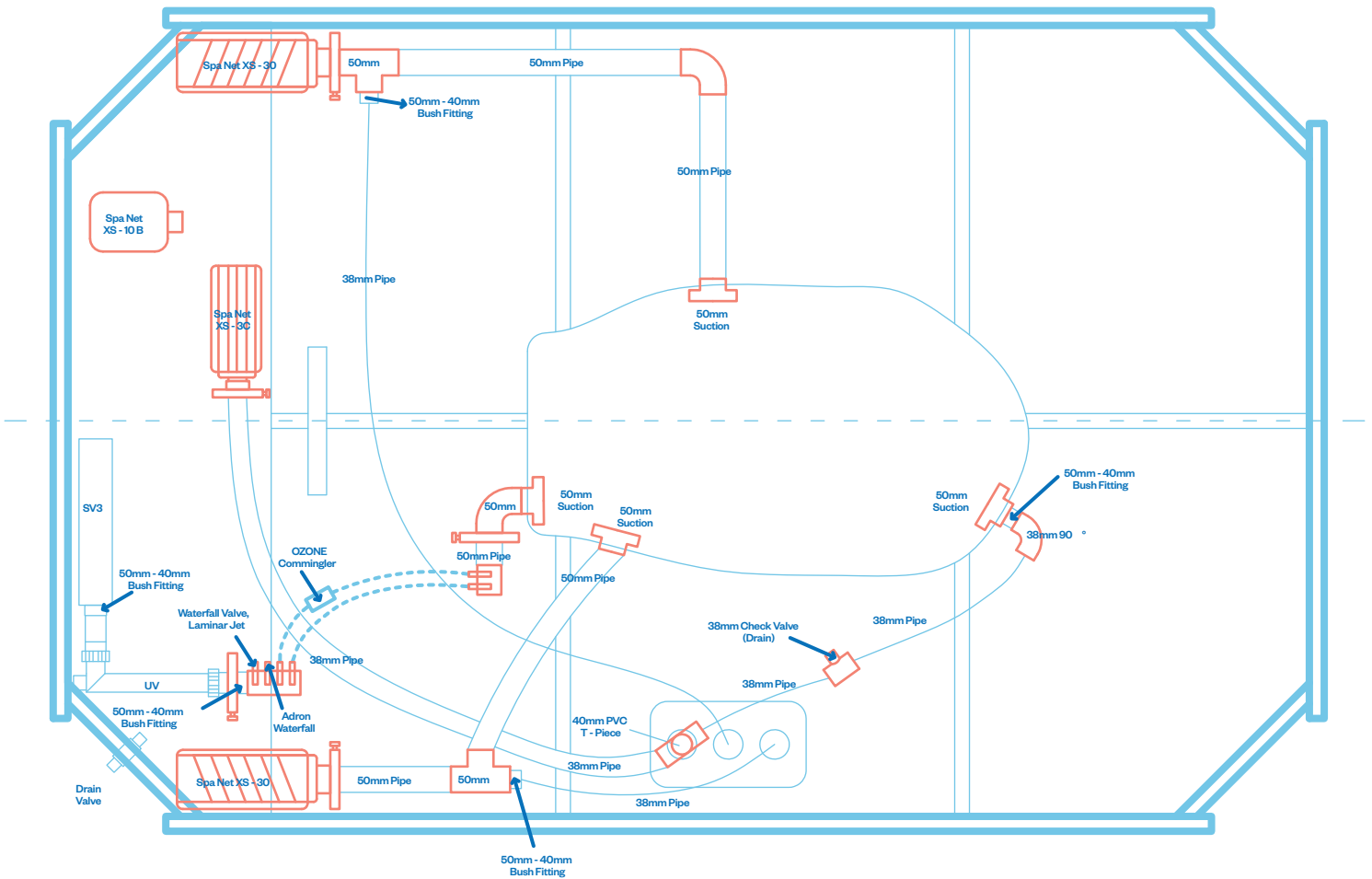
 24 x 50mm Directional Jets

 8 x 50mm Twin Spinner Jets

 22 x 40mm Air Jets

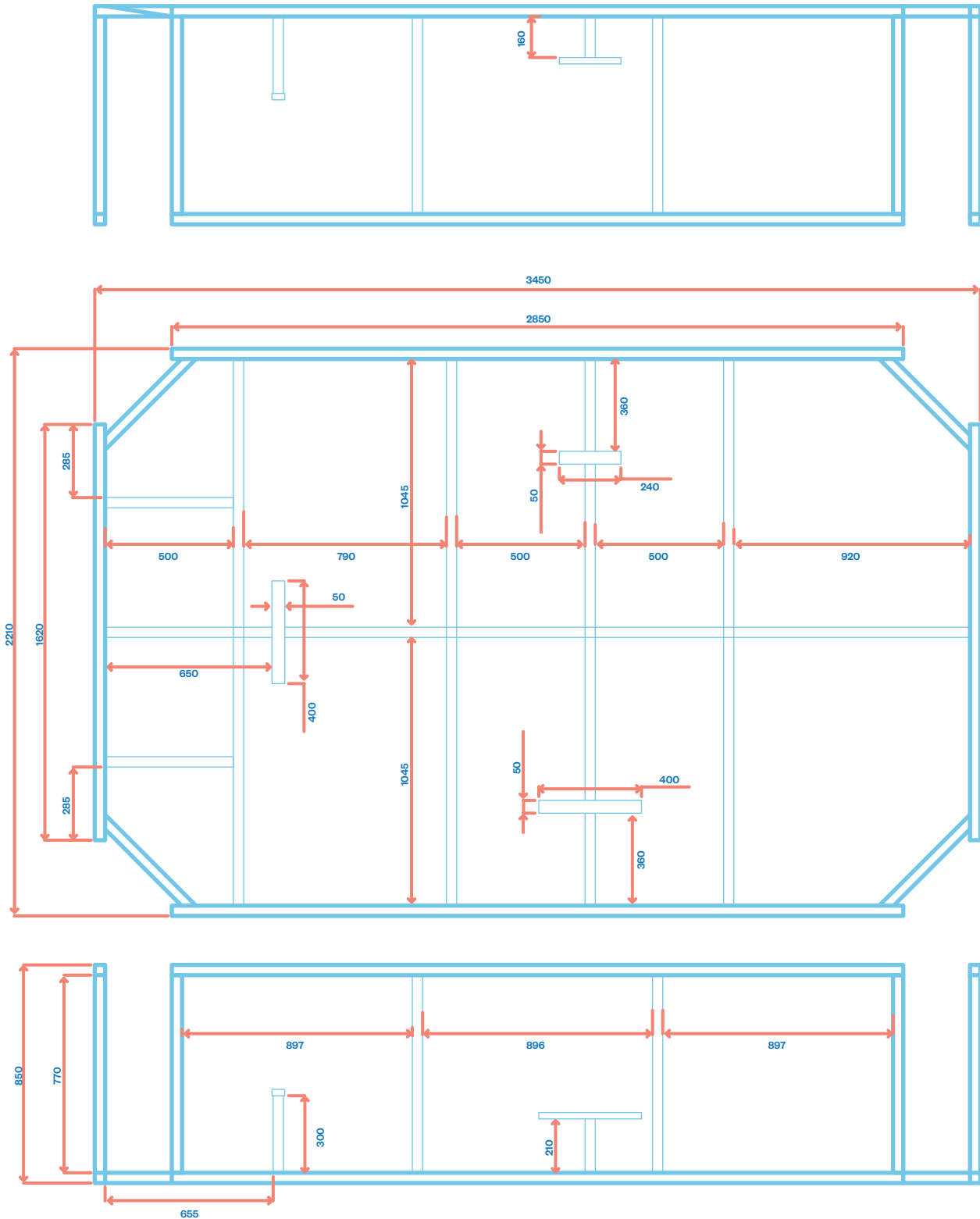


Palladium Spa



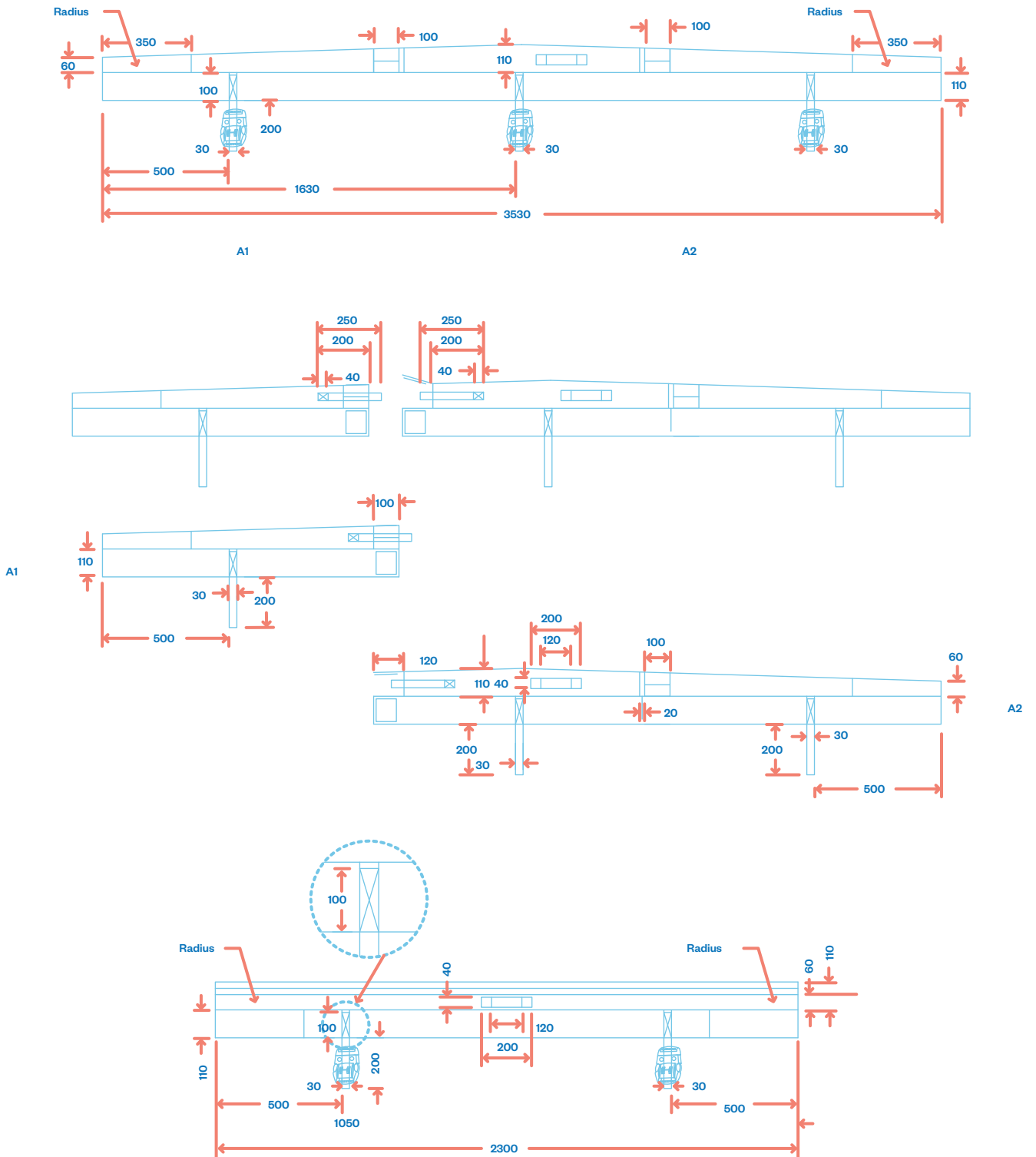


Palladium Spa



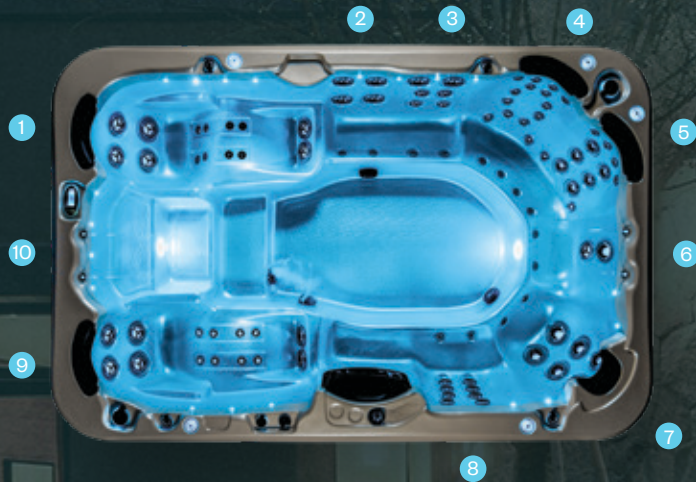


Palladium Spa



Palladium.

Hydrotherapy	★★★★★
Jets	88 / 98 (Hydroplus)
Volume	2650 litres
Seating	10 seats
Dimensions	3.52 x 2.29 x .90m high
Seat layout	



- | | |
|------------------------------|---------------------|
| 1. Lounger | 2. Back massage |
| 3. Back massage | 4. Love seat |
| 5. Love seat | 6. Cool down |
| 7. Neck and shoulder massage | 8. Back massage |
| 9. Lounger | 10. Cool down steps |

Features

Spa features

- Step down access
- LED backlit water cascade
- Spa health indicator
- Aromatherapy system
- Non-slip backlit drink holders
- Backlit laminar jets
- SmartSTREAM sound system*

Build

- Thermoclad maintenance free cabinet
- Superior USA made Aristech acrylic
- Thermobond 4 layer shell construction
- 12 shell/cabinet colour combinations
- Steel frame construction
- High impact moulded ABS base
- Duraflex 'no kink' PVC plumbing

Water care

- Purezone micro filtration
- Purezone CD Ozone water clarifier
- Purezone UV sterilising system

Lighting

- Programmable lighting
- Underwater LED floodlight
- Perimeter & cabinet lighting
- Hydroglow jet & topside control lighting

Hydrotherapy

- Stainless steel jet casings
- Neck therapy collar
- Dual hydrotherapy loungers
- Individual seat pressure controls
- Hydroflow stainless steel spinning jets

Control

- SpaNet premium control systems
- Smart phone app remote control*
- SmartLINK WIFI connectivity*

Efficiency

- Intelligent thermal tuning
- High density lockable hardcover
- Perimeter insulation
- Dual layer insulation
- Hybrid heat pump*
- Arctic pack insulation*

*optional

Specifications

		HP
Dry weight	665kg	752kg
Filled weight (inc cover)	3345kg	3432kg
Lift weight	930kg	930kg
Intuitive spa controller	SV3	SV3
Programmable circulation pump	250W	250W
Jet pumps	3HP x 2	3HP x 3
Variable speed airblower	1000W	1000W
Variable output heater	6kW max	6kW max
Electrical requirements	32 amps max	32 amps max

Warranties

Frame	Lifetime
Shell structure	10 years
Acrylic surface	5 years
Jets, plumbing & heater	5 years
Pumps & equipment	2 years



Vortex Spas

* Conditions apply. Specifications may change without notice. May be pictured with some options included.