



Vortex Spas

Aqualap Swim Spa Technical Information Pack



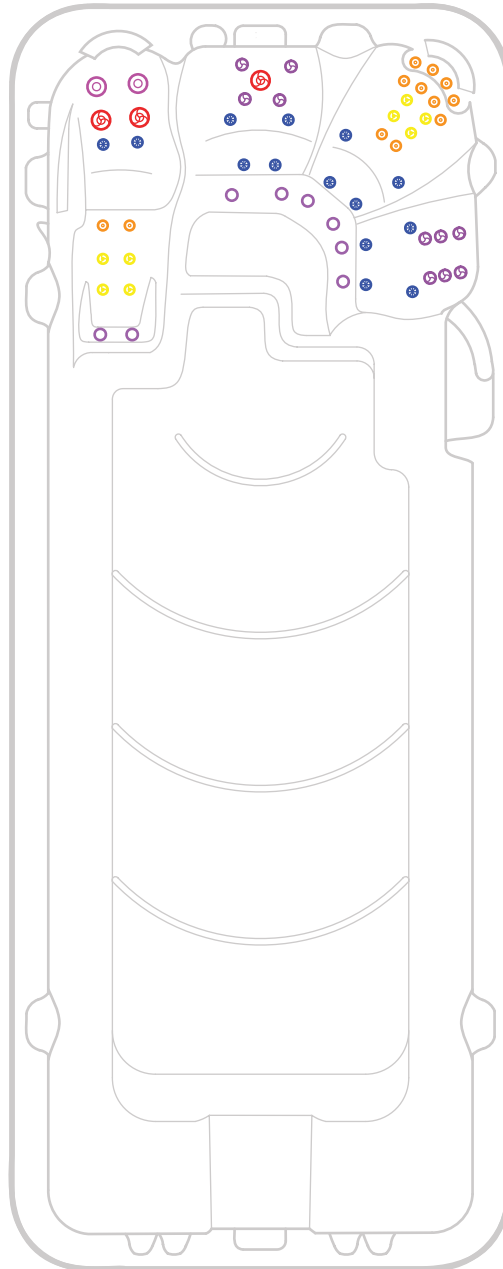
Dimensions: 590 x 230 x 130/150cm

For a true 'lap pool' experience
in a swim spa.



Aqualap Plunge Swim Spa

Dimensions: 590 x 230 x 130 / 150cm



 3 x 127mm Single Spinning Jets

 2 x 127mm Directional Jets

 8 x 75mm Directional Jets

 10 x 75mm Single Spinning Jets

 12 x 50mm Directional Jets

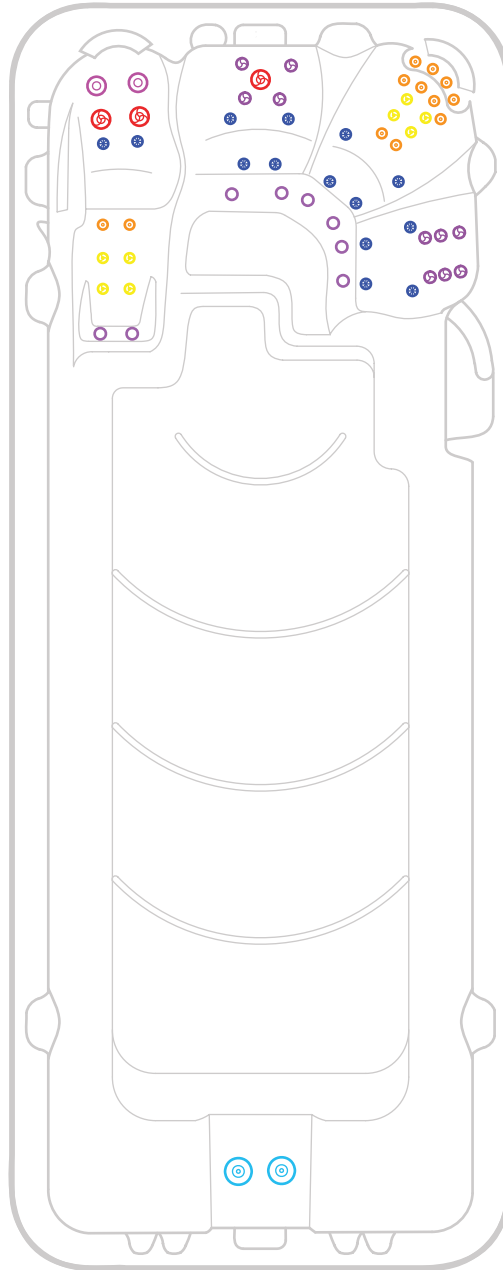
 8 x 50mm Twin Spinner Jets

 14 x 40mm Air Jets



Aqualap Pro Swim Spa

Dimensions: 590 x 230 x 130 / 150cm



-  2 x 150mm Swim Jets
-  3 x 127mm Single Spinning Jets
-  2 x 127mm Directional Jets

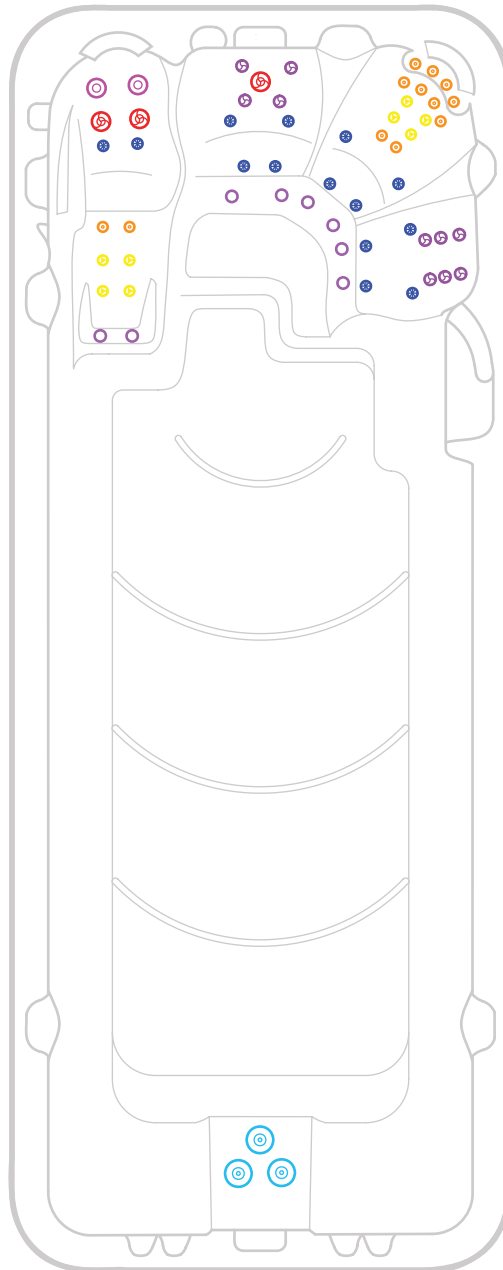
-  8 x 75mm Directional Jets
-  10 x 75mm Single Spinning Jets
-  12 x 50mm Directional Jets

-  8 x 50mm Twin Spinner Jets
-  14 x 40mm Air Jets





Aqualap Pro Plus Swim Spa

Dimensions: 590 x 230 x 130 / 150cm



-  3 x 150mm Swim Jets
-  3 x 127mm Single Spinning Jets
-  2 x 127mm Directional Jets

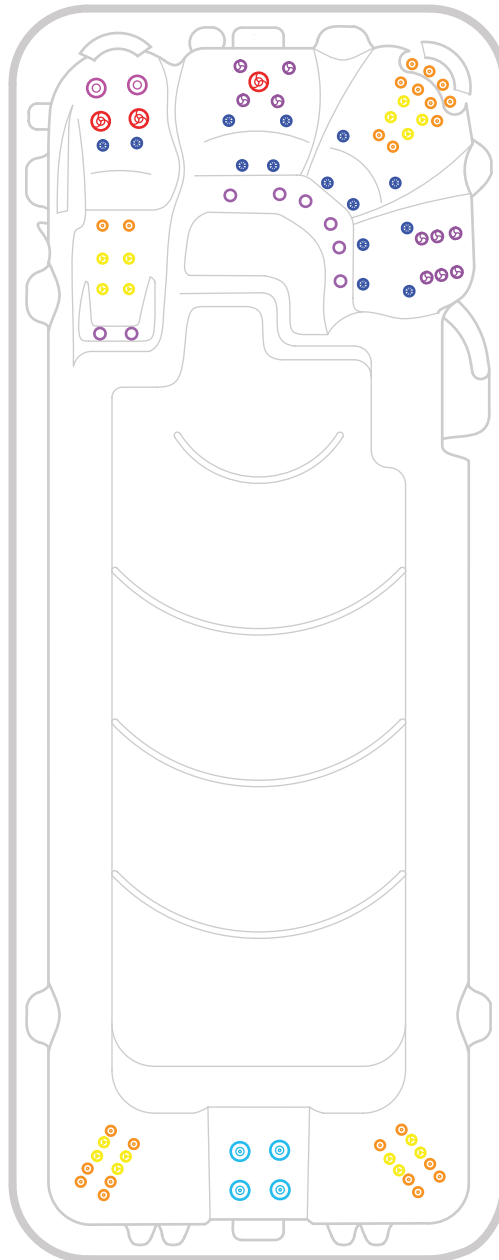
-  8 x 75mm Directional Jets
-  10 x 75mm Single Spinning Jets
-  12 x 50mm Directional Jets

-  8 x 50mm Twin Spinner Jets
-  14 x 40mm Air Jets



Aqualap Extreme Swim Spa

Dimensions: 590 x 230 x 130 / 150cm



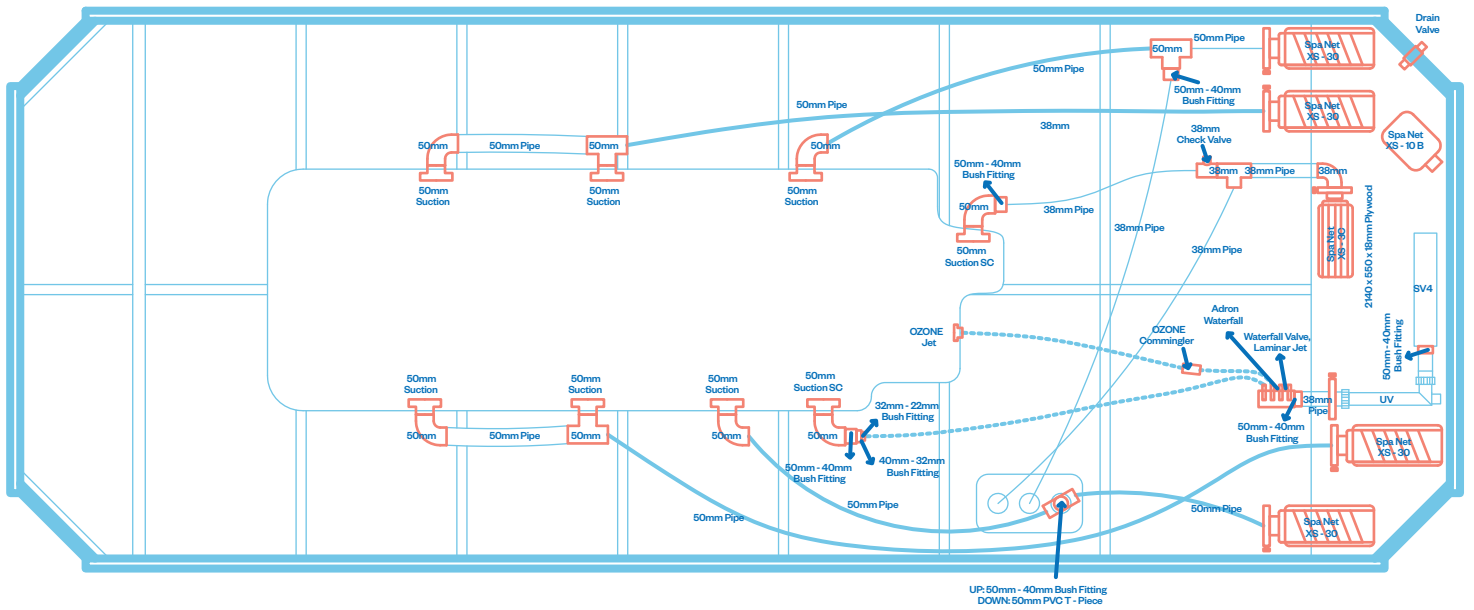
-  4 x 150mm Swim Jets
-  3 x 127mm Single Spinning Jets
-  2 x 127mm Directional Jets

-  8 x 75mm Directional Jets
-  10 x 75mm Single Spinning Jets
-  24 x 50mm Directional Jets

-  16 x 50mm Twin Spinner Jets
-  14 x 40mm Air Jets

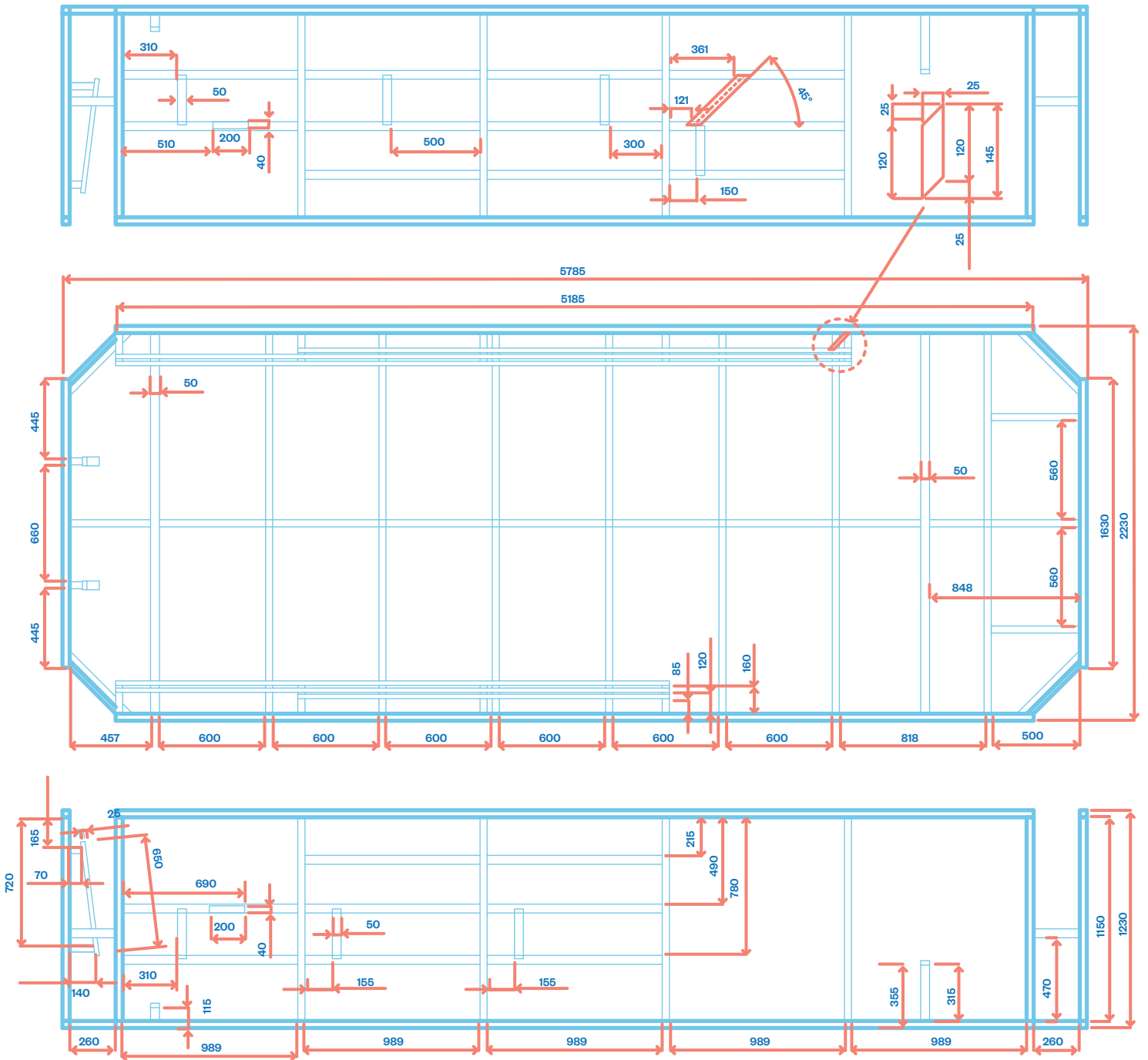


Aqualap Extreme Swim Spa



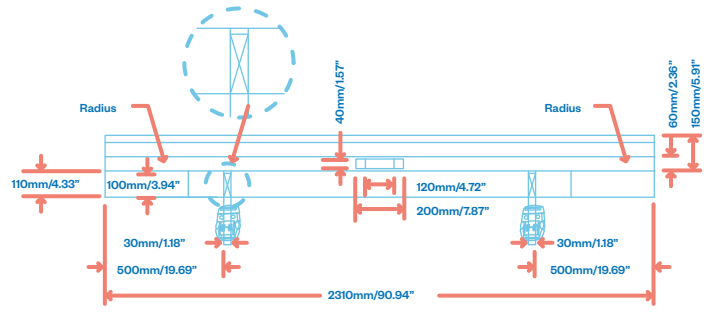
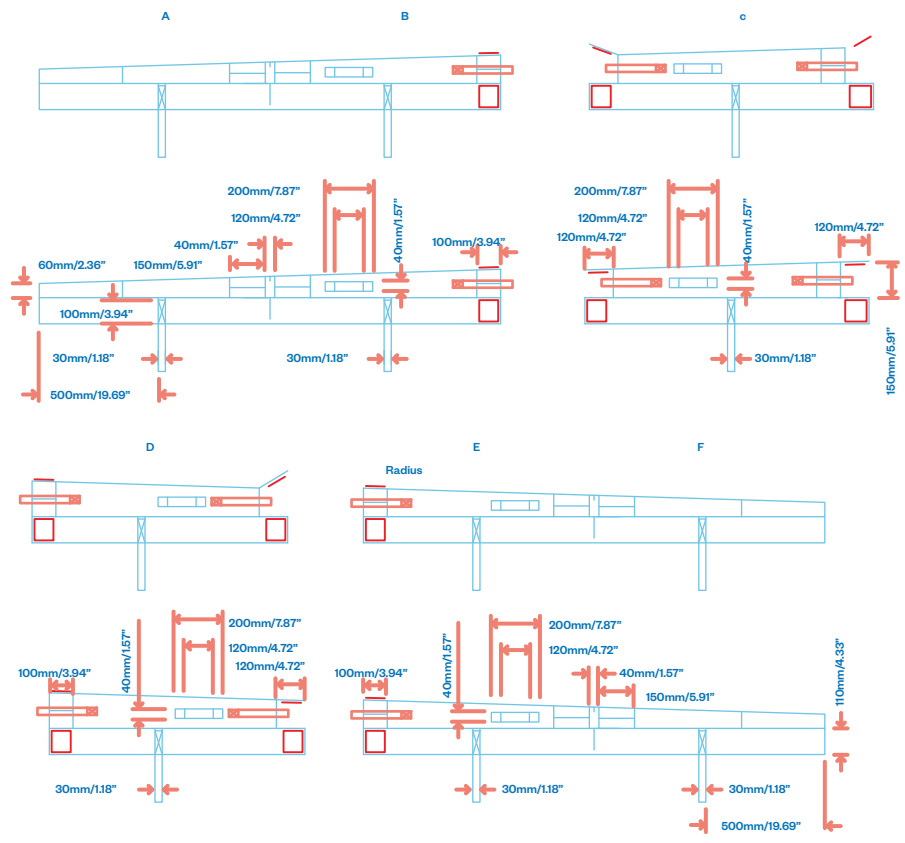
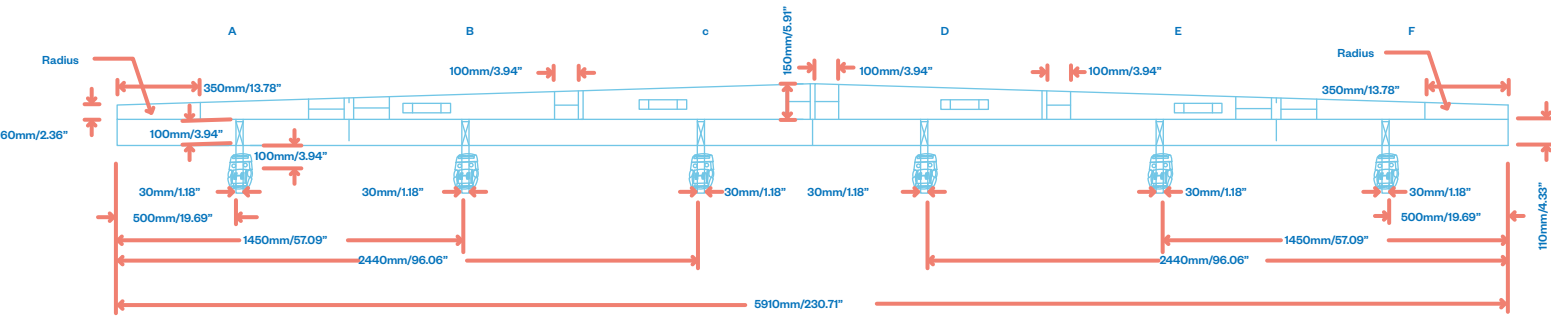


Aqualap Swim Spa





Aqualap Swim Spa



Aqualap.

Hydrotherapy ★ ★ ★ ★ ★

Jets Up to 81

Volume 8500 litres

Seating 4 seats

Dimensions 5.90 x 2.3 x 1.3m high

Seat layout

1. Lounger
2. Back massage
3. Neck and shoulder massage
4. Back massage



* Conditions apply. Specifications may change without notice. May be pictured with some options included.

Features

Spa features

- LED backlit water cascade
- Spa health indicator
- Aromatherapy system
- Non-slip backlit drink holders
- Backlit laminar jets
- SmartSTREAM sound system*

Build

- Thermoclad maintenance free cabinet
- Superior USA made Aristech acrylic
- Thermobond 4 layer shell construction
- 12 shell/cabinet colour combinations
- Steel frame construction
- Duraflex 'no kink' PVC plumbing

Water care

- Purezone micro filtration
- Purezone CD Ozone water clarifier
- Purezone UV sterilising system

*optional

Lighting

- Programmable lighting
- Underwater LED floodlight
- Perimeter & cabinet lighting
- Hydroglow jet & topside control lighting

Hydrotherapy

- Stainless steel jet casings
- Neck therapy collar
- Hydrotherapy lounger
- Individual seat pressure controls
- Hydroflow stainless steel spinning jets

Control

- SpaNet premium control systems
- Smart phone app remote control*
- SmartLINK WIFI connectivity*

Efficiency

- Intelligent thermal tuning
- High density lockable hardcover
- Perimeter insulation
- Dual layer insulation
- Hybrid heat pump*
- Arctic pack insulation*

Specifications

	Plunge	Pro	Pro Plus	Extreme
Dry weight	1350kg	1400kg	1450kg	1500kg
Filled weight (inc cover)	9909kg	9959kg	10009kg	10059kg
Lift weight	1800kg	1800kg	1800kg	1800kg
Intuitive spa controller	SV2	SV3	SV3	SV4
Programmable circulation pump	250W	250W	250W	250W
Jet pumps	3hp x 1	3hp x 2	3hp x 3	3hp x 4
Variable speed airblower	Optional	1000W	1000W	1000W
Variable output heater	3kW	6kW	6kW	6kW
Electrical requirements	15 amps	32 amps	32 amps	40 amps

Warranties

Frame: Lifetime | Shell structure: 10 years | Acrylic surface: 5 years | Jets, plumbing & heater: 5 years | Pumps & equipment: 2 years

Aqualap XD.

Hydrotherapy ★ ★ ★ ★ ★

Jets Up to 81

Volume 9720 litres

Seating 4 seats

Dimensions 5.90 x 2.3 x 1.5m high

Seat layout

1. Lounger
2. Back massage
3. Neck and shoulder massage
4. Back massage



* Conditions apply. Specifications may change without notice. May be pictured with some options included. 1.3m shown

Features

Spa features

LED backlit water cascade
Spa health indicator
Aromatherapy system
Non-slip backlit drink holders
Backlit laminar jets
SmartSTREAM sound system*

Build

Thermoclad maintenance free cabinet
Superior USA made Aristech acrylic
Thermobond 4 layer shell construction
12 shell/cabinet colour combinations
Steel frame construction
Duraflex 'no kink' PVC plumbing

Water care

Purezone micro filtration
Purezone CD Ozone water clarifier
Purezone UV sterilising system

*optional

Lighting

Programmable lighting
Underwater LED floodlight
Perimeter & cabinet lighting
Hydroglow jet & topside control lighting

Hydrotherapy

Stainless steel jet casings
Neck therapy collar
Hydrotherapy lounger
Individual seat pressure controls
Hydroflow stainless steel spinning jets

Control

SpaNet premium control systems
Smart phone app remote control*
SmartLINK WIFI connectivity*

Efficiency

Intelligent thermal tuning
High density lockable hardcover
Perimeter insulation
Dual layer insulation
Hybrid heat pump*
Arctic pack insulation*

Specifications

	Plunge XD	Pro XD	Pro Plus XD	Extreme XD
Dry weight	1425kg	1475kg	1525kg	1575kg
Filled weight (inc cover)	11204kg	11254kg	11304kg	11354kg
Lift weight	1900kg	1900kg	1900kg	1900kg
Intuitive spa controller	SV2	SV3	SV3	SV4
Programmable circulation pump	250W	250W	250W	250W
Jet pumps	3hp x 1	3hp x 2	3hp x 3	3hp x 4
Variable speed airblower	Optional	1000W	1000W	1000W
Variable output heater	3kW	6kW	6kW	6kW
Electrical requirements	15 amps	32 amps	32 amps	40 amps

Warranties

Frame: Lifetime | Shell structure: 10 years | Acrylic surface: 5 years | Jets, plumbing & heater: 5 years | Pumps & equipment: 2 years